

STAINLESS STEEL



Ref. HL103 stainless steel  
Structural wall plate



Ref. HL 204 stainless steel  
Turn tube



Ref. HL103 stainless steel  
Structural wall plate



Ref. HL 203 stainless steel  
Intermediate structural anchor point



Ref. HL 750 stainless steel  
Turn plate set



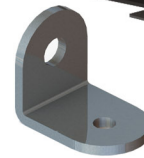
Ref. HL320 stainless steel  
Rope absorber/stretcher



Ref. HL 506 stainless steel  
Svageles cable terminal



Ref. HL 501 stainless steel  
Stainless cable diam. 8 mm



Ref. HL724 stainless steel  
Post bracket



Ref. HL320 stainless steel  
Rope absorber/stretcher



Ref. HL 801 - Label  
PCV plate  
Ref. HL 802 - Label  
stainless steel plate



Ref. HL602 stainless steel  
Slider openable



Ref. HL 702  
Lateral foot post



Ref. HL 704  
(200mm, 300mm,  
400mm, 500mm)



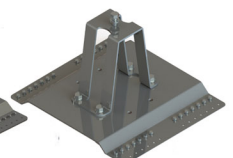
Ref. HL 701 Central foot post  
(200mm, 300mm, 400mm)



Ref. HL 703  
Central foot post  
- square (500mm)



Ref. HL720  
Roof sheet post



Ref. HL760  
Roof sheet post

galvanized steel